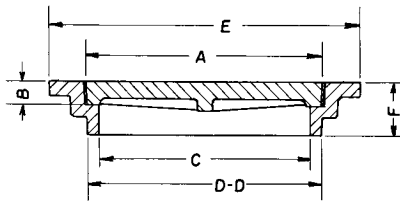
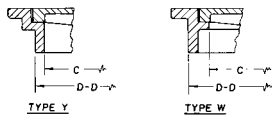


R-6013 to R-6099 Series
Manhole Frame, Solid Lid

Heavy Duty



Illustrating R-6030

Lids are available with lift handles or fastening devices if specified.

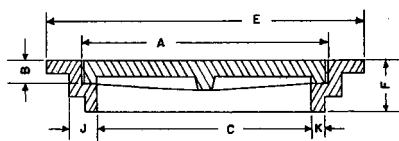
Dimensions in inches

Catalog No.	A	B	C	DD	E	F	Frame Type
R-6013	6 1/2	1 1/4	5 1/2	6 3/4	10	2 1/2	Y
R-6014 *	9	1	8	9	12	2 1/2	Y
R-6016 *	14	1 1/4	12	13	18	3	Y
R-6017	17	1 1/4	15	16	21	4	Y
R-6017-A	18	1 1/4	16	17	22	4 1/2	Y
R-6018	21	2 1/2	18	20	27 1/2	5	Y
R-6019 *	22 3/4	1 3/4	20	23	25	4 1/2	Y
R-6021	23	1 1/4	20	22	29 3/4	4	Y
R-6030	23	1 3/4	21	22 3/4	30	4	Y
R-6033	23	1 3/4	21	22 3/4	30	4	Y
R-6035	23	1 3/4	21	22 3/4	30	8	Y
R-6041	24	1 5/8	22	25 1/4	30	4	W
R-6041-A	24	1 5/8	22	25 1/4	30	6	W
R-6041-B	24	1 5/8	22	25 1/4	30	8	W
R-6050	27	1 1/4	23 1/2	25 1/2	33 1/2	4	Y
R-6060	26	1 5/8	24	27	36	5	W
R-6065	25 3/8	1 3/4	23 7/8	26	30	6	Y
R-6065-A	25 3/8	1 3/4	23 7/8	26 1/8	30 1/4	8	Y
R-6066	27	2 1/2	24	26	33 1/2	5	Y
R-6067 *	27	2 1/2	24	26	33 1/2	5	Y
R-6074	28 1/2	1 1/4	26 1/2	27 1/2	35	3 1/2	Y
R-6075	29	1 3/4	27	29	35	6	Y
R-6078	32 3/8	2	30	32 1/2	39 1/2	6	Y
R-6095 *	38	1 1/2	36	38	49	4 1/2	Y
R-6099	50 1/2	1	48	49 1/2	54	6	Y

* Furnished with Platen lid.

R-6052 Series
Manhole Frame, Solid Lid, U.S Government Standard

Heavy Duty



Illustrating R-6052-G

For Frame/Grate alternatives, see the R-2565 Series.

Dimensions in inches

Catalog No.	A	B	C	E	F	J	K
R-6052-A	21	2 1/2	18	27 1/2	5	2 7/8	1
R-6052-C	23	1 1/4	20	29 3/4	4	2 1/2	1
R-6052-D	27	1 1/4	23 1/2	33 1/2	4	2 1/4	3/4
R-6052-G	27	2 1/2	24	33 1/2	5	2 7/8	1
R-6052-H	29	1 3/4	27	35	6	2 7/8	1
R-6052-J	32 3/8	2	30	39 1/2	6	2 7/8	1